

Bluebox/Western SIGMA 2002 18.4 LN

Specifications

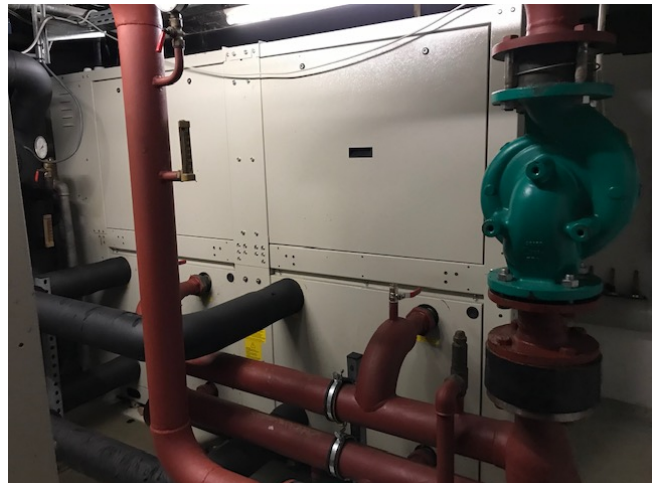
Brand	Bluebox/Western
Type	SIGMA 2002 18.4 LN
Product type	Water Cooled Chiller
Capacité kW	209
Capacity Tons	59,42
Réfrigérant	Freon
Refrigerant Type	R 407 C
module hydraulique	✓
Weight	1069
Sizes	2476x768x1700mm (LxHxW)
Compressor(s) type & model	4pieces Danfoss SZ185S4RC & SZ240A4MBB
Display	Carel
Remarks	YOB 2011
Remarks	As good as new
Remarks	chiller- A has 2 running hours!!
More info?	chiller- B has 1500 running hours!!
Stock	2

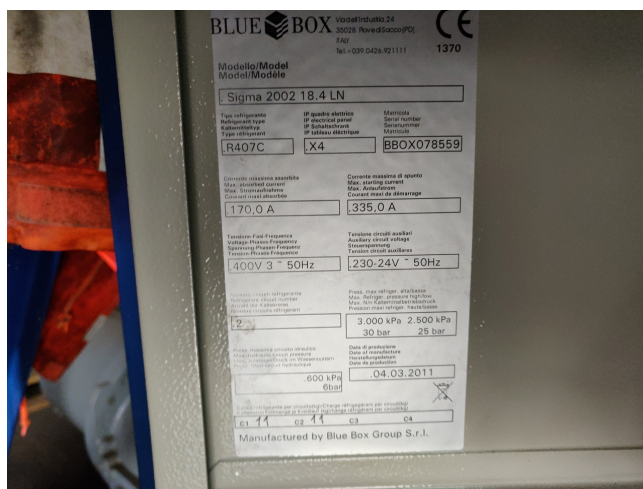
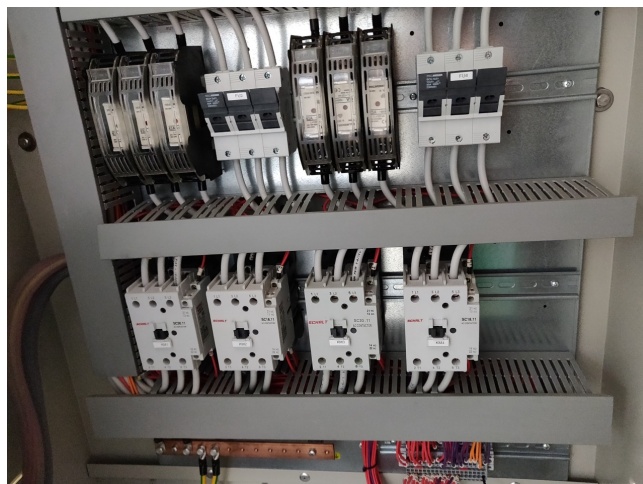


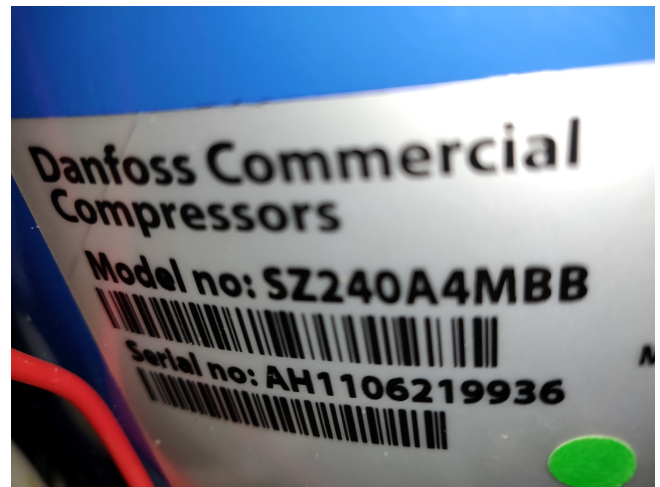
Description

Used Bluebox/Western SIGMA 2002 18.4 LN

Bluebox/Western SIGMA 2002 LN 18.4 Water Cooled Waterchiller, build in 2011. This used Waterchiller has 4 scroll compressor Maneurope - Danfoss SZ185S4RC & SZ240A4MBB, "*Why choose for HOSBV? Were not only the largest used refrigeration specialist in Europe, but also, we deliver all equipment including an extensive test, warranty and industrial cleaning. Optional we can arrange shipment and export documents."







TECHNICAL DATA



GRANDEZZA UNITA'		18.4	20.4	24.4	26.4	UNIT SIZE
Raffreddamento⁽¹⁾						Cooling⁽¹⁾
Raza nominale	kW	205	241	267.4	293.9	Nominal capacity
Portata acqua evaporatore	l/s	9,985	11,514	12,778	14,042	Water flow rate evaporator
	(l/h)	35,944	41,449	46,000	50,550	
Perdita di carico evaporatore	kPa	39	35	33.1	34.1	Pressure drop evaporator
Portata acqua condensatore	l/s	12,238	14,147	15,657	17,247	Water flow rate condenser
	(l/h)	44,130	50,931	56,509	62,088	
Perdita di carico condensatore	kPa	25.8	28.1	29.9	26.7	Pressure drop condenser
Riscaldamento⁽¹⁾						Heating⁽¹⁾
Raza nominale	kW	257.4	297.9	332.3	366.6	Nominal capacity
Portata acqua condensatore	l/s	12,297	14,233	15,874	17,516	Water flow rate condenser
	(l/h)	44,268	51,238	57,147	63,056	
Perdita di carico condensatore	kPa	57.6	52.3	49.9	51.9	Pressure drop condenser
Portata acqua evaporatore	l/s	9,418	10,894	12,163	13,432	Water flow rate evaporator
	(l/h)	33,904	39,218	43,786	48,354	
Perdita di carico evaporatore	kPa	15.6	17	18.3	16.5	Pressure drop evaporator
Compressori	tipo	scroll	scroll	scroll	scroll	Compressors
Quantità	n	4	4	4	4	Number
Potenza assorbita raffredd ⁽¹⁾	kW	47.6	55.1	61.1	67.1	Cooling power input ⁽¹⁾
Potenza assorbita riscaldamento ⁽¹⁾	kW	60.3	69.9	77.7	85.5	Heating power input ⁽¹⁾
Gradini di parzialeizzazione	%	0-25-50-75-100	0-25-50-75-100	0-25-50-75-100	0-25-50-75-100	Capacity steps
Carica refrigerante						Refrigerant charge
Versione chiller	kg	2 x 12.9	2 x 15.9	2 x 17.4	2 x 20.7	Chiller version
Versione pompa di calore	kg	2 x 10.4	2 x 13	2 x 14.4	2 x 17.8	Heat pump version
Olio						Oil
Carica olio	l	2 x 8 + 2 x 6.6	4 x 8	4 x 8	4 x 8	Oil charge
Marca olio		maneurop	maneurop	maneurop	maneurop	Oil producer
Tipo olio		160 P	160 P	160 P	160 P	Oil type